



# MEREWOOD APARTMENTS

377 & 385 Moilliet Street South  
Parksville, BC

## HOLLY 386 sq ft

The floor plan illustrated here includes these finishes:



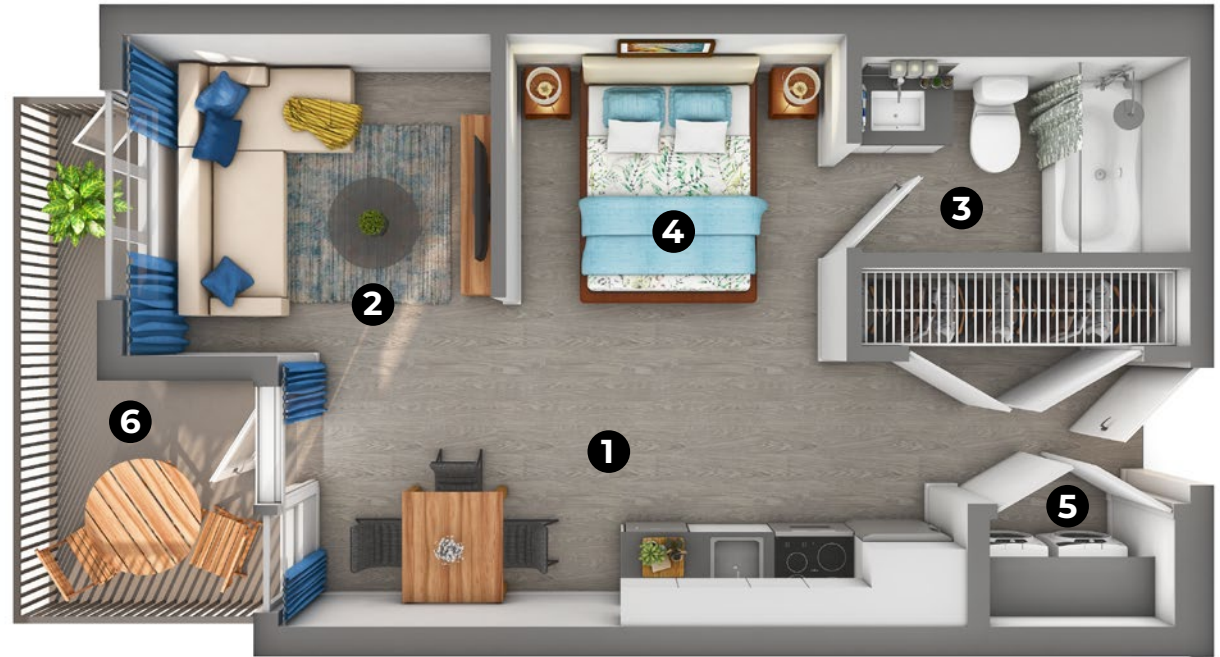
CABINETRY:  
FLAT SLAB



COUNTERS:  
QUARTZ



FLOORING:  
LUXURY  
VINYL TILE



- 1** Kitchen/Dining | **2** Living Room | **3** Bathroom | **4** Bedroom | **5** Laundry
  - 6** Balcony
- 6' 7" x 17' 8" | 9' 6" x 10' 8" | 5' x 8' 6" | 9' 6" x 9' 8" | 4' x 5' | 14' x 7'

Please note, all floor plans and photos are provided for illustrative purposes only. ALL MEASUREMENTS ARE APPROXIMATE. Actual layouts may be different than shown and could vary in size and scale. [merewoodapartments.ca](http://merewoodapartments.ca)



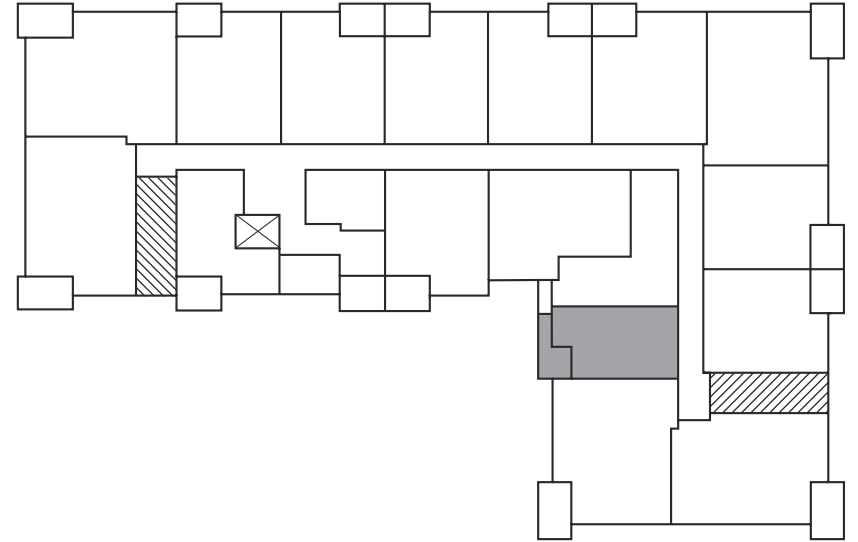
# MEREWOOD APARTMENTS

377 & 385 Moilliet Street South  
Parksville, BC

HOLLY  
386 sq ft

## 377 Moilliet Street South

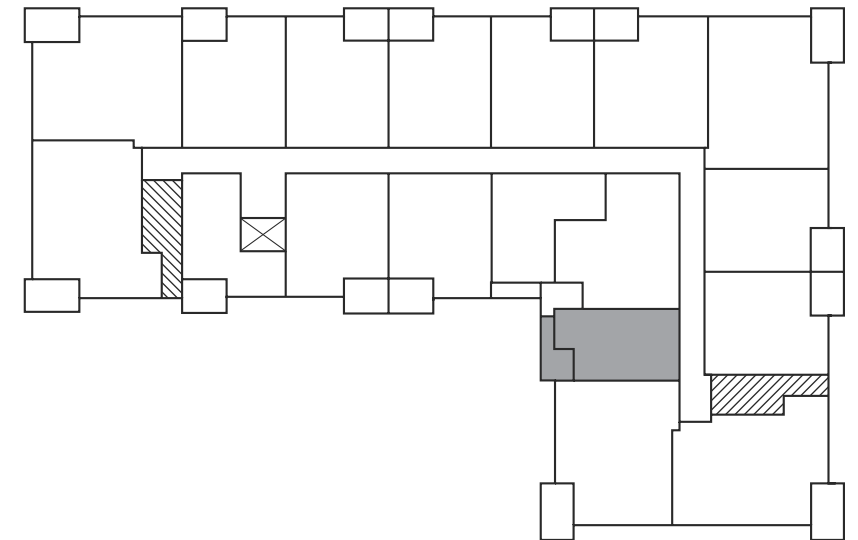
First Floor



☒ Elevator ☒ Stairwell

## 377 Moilliet Street South

Second Floor –  
Fourth Floor



☒ Elevator ☒ Stairwell



# MEREWOOD APARTMENTS

377 & 385 Moilliet Street South  
Parksville, BC

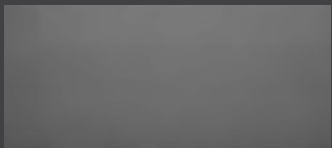
## ASPEN

401 sq ft

The floor plan illustrated here includes these finishes:



CABINETRY:  
FLAT SLAB



COUNTERS:  
QUARTZ



FLOORING:  
LUXURY  
VINYL TILE



- 1** Kitchen/Dining  
15' 3" x 12' 9"
- 2** Bathroom  
8' 6" x 5'
- 3** Bedroom  
10' 7" x 10' 7"
- 4** Laundry  
3' 3" x 3' 10"
- 5** Balcony  
7' x 9' 5"

Please note, all floor plans and photos are provided for illustrative purposes only. ALL MEASUREMENTS ARE APPROXIMATE. Actual layouts may be different than shown and could vary in size and scale. [merewoodapartments.ca](http://merewoodapartments.ca)



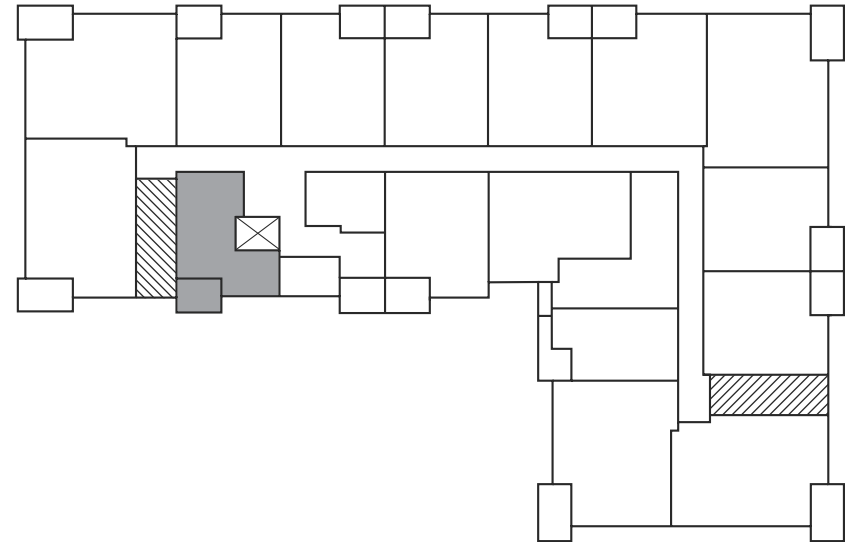
# MEREWOOD APARTMENTS

377 & 385 Moilliet Street South  
Parksville, BC

ASPEN  
401 sq ft

## 377 Moilliet Street South

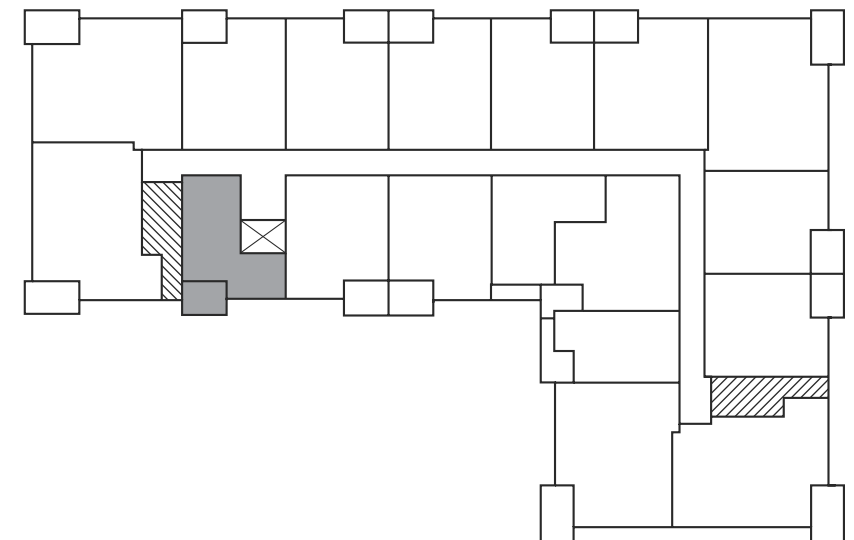
First Floor



⊗ Elevator   ⊗ Stairwell

## 377 Moilliet Street South

Second Floor –  
Fourth Floor



⊗ Elevator   ⊗ Stairwell



# MEREWOOD APARTMENTS

377 & 385 Moilliet Street South  
Parksville, BC

## SYCAMORE 438-442 sq ft

The floor plan illustrated here includes these finishes:



CABINETY:  
FLAT SLAB



COUNTERS:  
QUARTZ



FLOORING:  
LUXURY  
VINYL TILE



**1** Kitchen/Dining  
11' 9" x 13'

**2** Living/Bedroom  
12' 8" x 13' 6"

**3** Bathroom  
9' 10" x 5'

**4** Laundry  
5' x 3'

Please note, all floor plans and photos are provided for illustrative purposes only. ALL MEASUREMENTS ARE APPROXIMATE. Actual layouts may be different than shown and could vary in size and scale. [merewoodapartments.ca](http://merewoodapartments.ca)



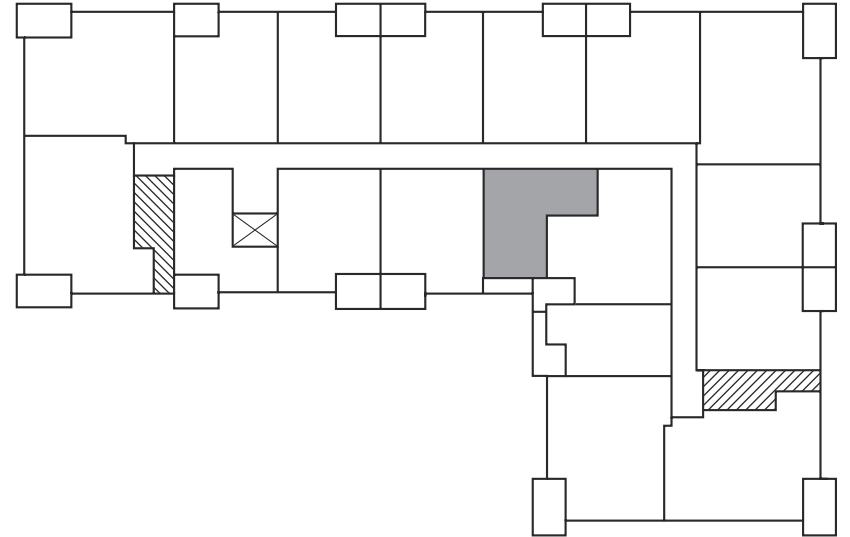
# MEREWOOD APARTMENTS

377 & 385 Moilliet Street South  
Parksville, BC

SYCAMORE  
438-442 sq ft

## 377 Moilliet Street South

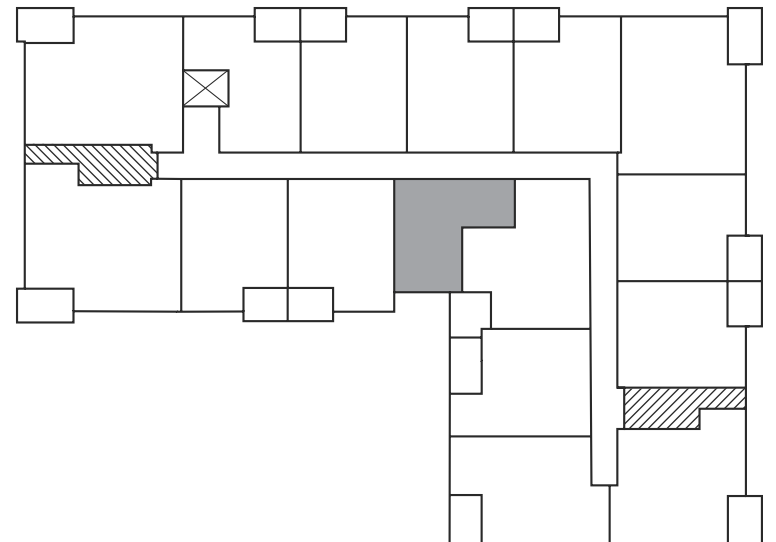
Second Floor –  
Fourth Floor



☒ Elevator ☒ Stairwell

## 385 Moilliet Street South

Second Floor –  
Fourth Floor



☒ Elevator ☒ Stairwell



# MEREWOOD APARTMENTS

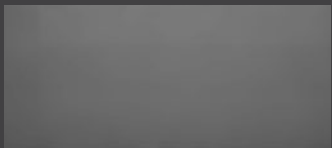
377 & 385 Moilliet Street South  
Parksville, BC

## MULBERRY 504 sq ft

The floor plan illustrated here includes these finishes:



CABINETY:  
FLAT SLAB



COUNTERS:  
QUARTZ



FLOORING:  
LUXURY  
VINYL TILE



- 1** Kitchen/Dining | **2** Living Room | **3** Bathroom | **4** Bedroom | **5** Laundry
- 6** Balcony

Please note, all floor plans and photos are provided for illustrative purposes only. ALL MEASUREMENTS ARE APPROXIMATE. Actual layouts may be different than shown and could vary in size and scale. [merewoodapartments.ca](http://merewoodapartments.ca)



# MEREWOOD APARTMENTS

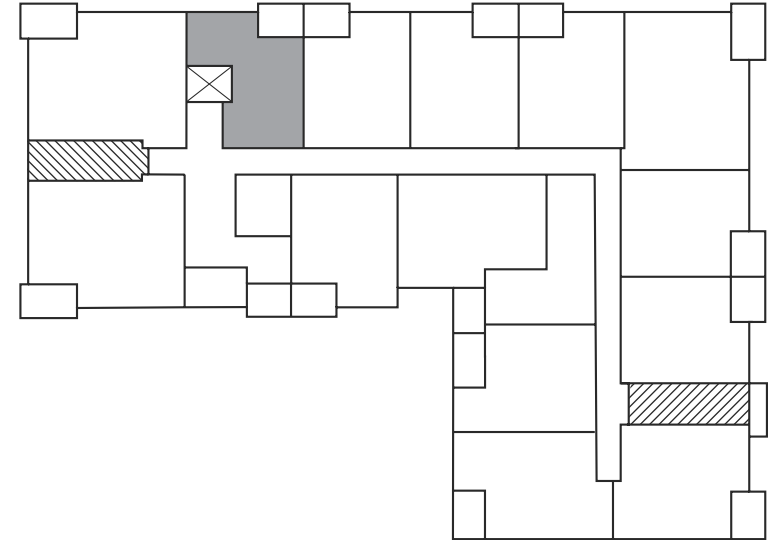
377 & 385 Moilliet Street South  
Parksville, BC

MULBERRY

504 sq ft

## 385 Moilliet Street South

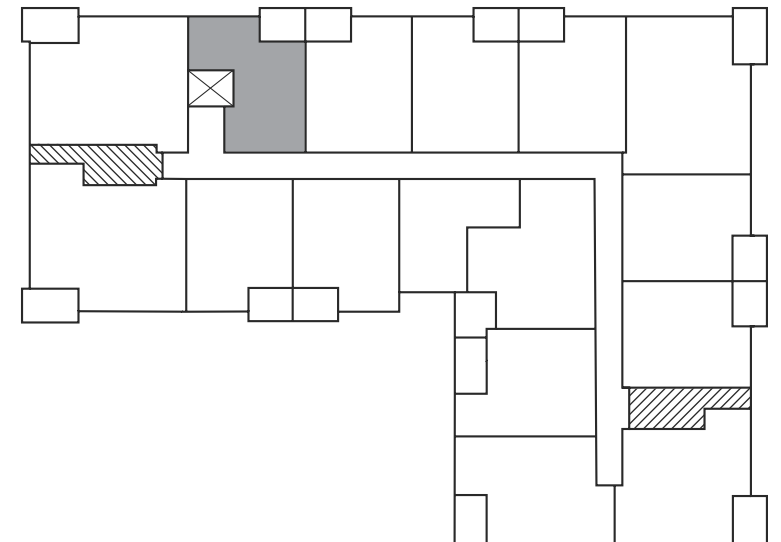
First Floor



⊠ Elevator   ⊠ Stairwell

## 385 Moilliet Street South

Second Floor –  
Fourth Floor



⊠ Elevator   ⊠ Stairwell