



MEREWOOD APARTMENTS

377 & 385 Moilliet Street South
Parksville, BC

CYPRESS

795-856 sq ft

The floor plan illustrated here includes these finishes:



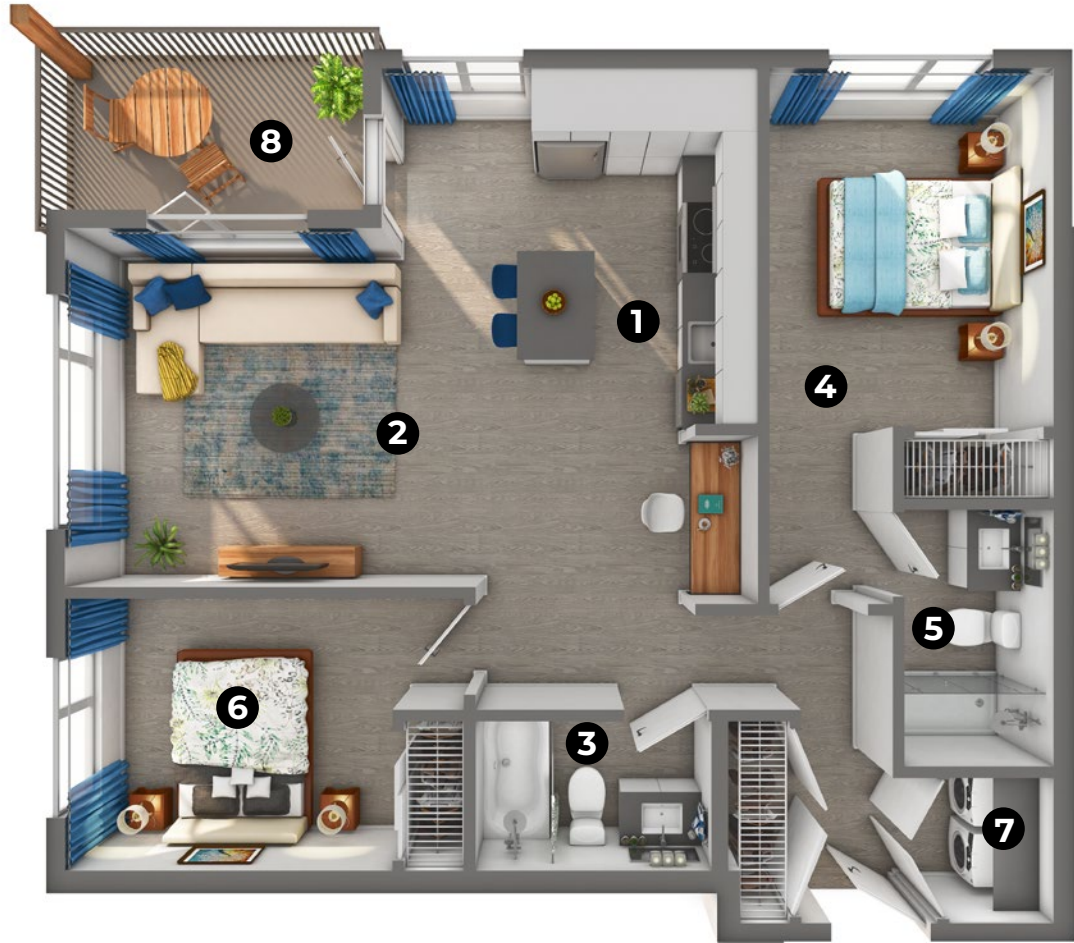
CABINETY:
FLAT SLAB



COUNTERS:
QUARTZ



FLOORING:
LUXURY
VINYL TILE



- | | | | | |
|---|--------------------------------------|------------------------------|------------------------------------|--------------------------------|
| 1 Kitchen/Dining
17' x 12' 8" | 2 Living Room
12' x 10' 8" | 3 Bathroom
5' x 8' | 4 Bedroom
12' 1" x 9' 6" | 5 Ensuite
8' 7" x 5' |
| 6 Bedroom
9' 2" x 11' | 7 Laundry
5' x 3' 6" | 8 Balcony
7' x 12' | | |

Please note, all floor plans and photos are provided for illustrative purposes only. ALL MEASUREMENTS ARE APPROXIMATE. Actual layouts may be different than shown and could vary in size and scale. merewoodapartments.ca



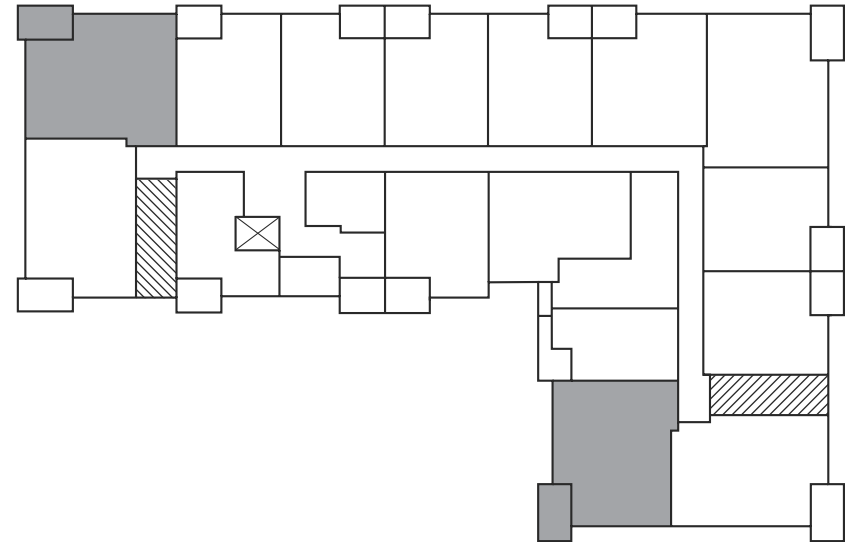
MEREWOOD APARTMENTS

377 & 385 Moilliet Street South
Parksville, BC

CYPRESS
795-856 sq ft

377 Moilliet Street South

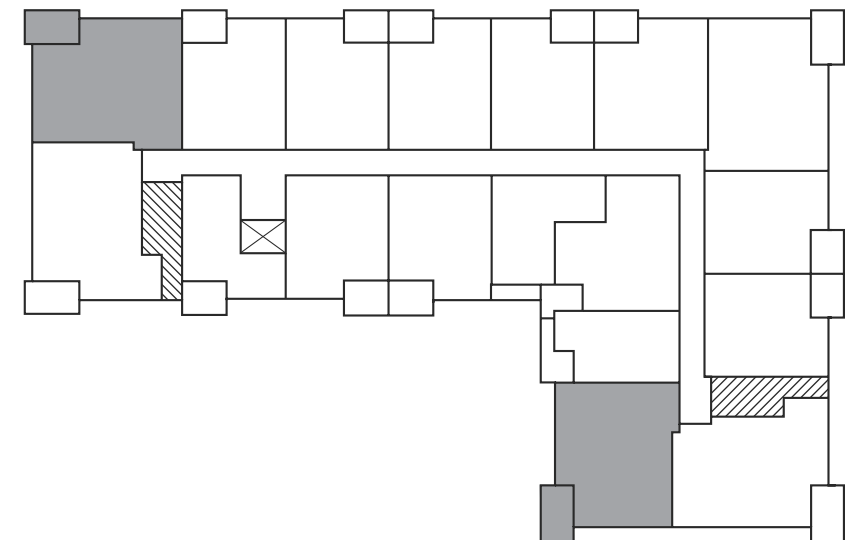
First Floor



⊗ Elevator ⊗ Stairwell

377 Moilliet Street South

Second Floor –
Fourth Floor



⊗ Elevator ⊗ Stairwell



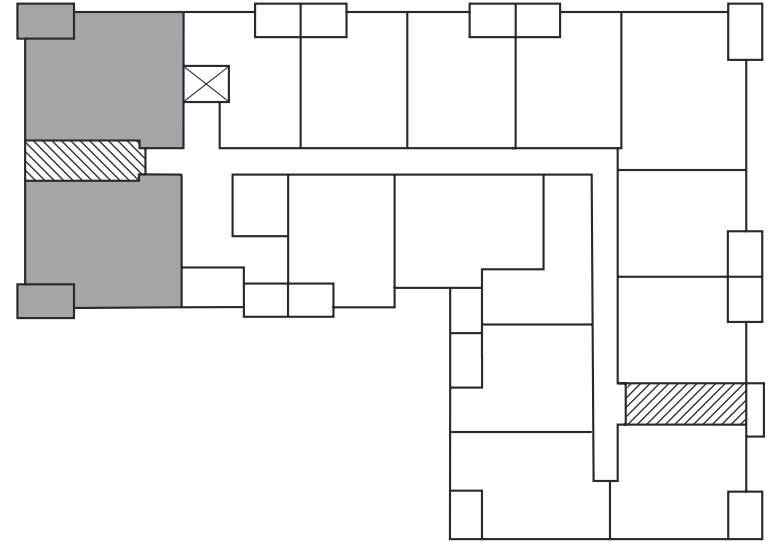
MEREWOOD APARTMENTS

377 & 385 Moilliet Street South
Parksville, BC

CYPRESS
795-856 sq ft

385 Moilliet Street South

First Floor



 Elevator  Stairwell



MEREWOOD APARTMENTS

377 & 385 Moilliet Street South
Parksville, BC

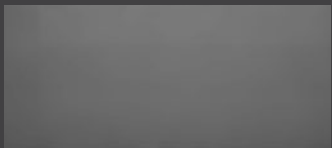
COTTONWOOD

848-897 sq ft

The floor plan illustrated here includes these finishes:



CABINETY:
FLAT SLAB



COUNTERS:
QUARTZ



FLOORING:
LUXURY
VINYL TILE



- | | | | | |
|--------------------------------------|--------------------------------------|---------------------------------|--------------------------------------|--------------------------------|
| 1 Kitchen/Dining
12' x 13' | 2 Living Room
10' x 11' 3" | 3 Bathroom
8' 2" x 5' | 4 Bedroom
13' 7" x 10' 10" | 5 Ensuite
5' x 9' 6" |
| 6 Bedroom
12' x 9' | 7 Laundry
5' x 3' | 8 Balcony
7' x 12' | | |

Please note, all floor plans and photos are provided for illustrative purposes only. ALL MEASUREMENTS ARE APPROXIMATE. Actual layouts may be different than shown and could vary in size and scale. merewoodapartments.ca



MEREWOOD APARTMENTS

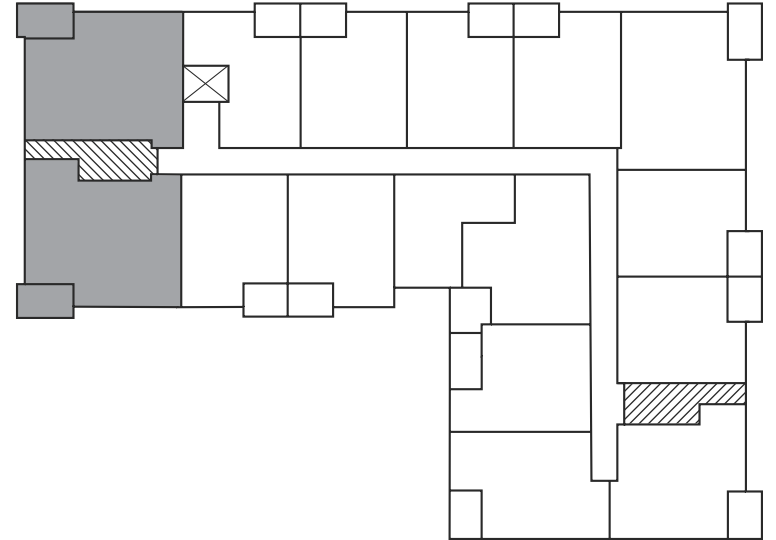
377 & 385 Moilliet Street South
Parksville, BC



COTTONWOOD

848-897 sq ft

385 Moilliet Street South

Second Floor –
Fourth Floor



 Elevator  Stairwell



MEREWOOD APARTMENTS

377 & 385 Moilliet Street South
Parksville, BC

REDWOOD

850 sq ft

The floor plan illustrated here includes these finishes:



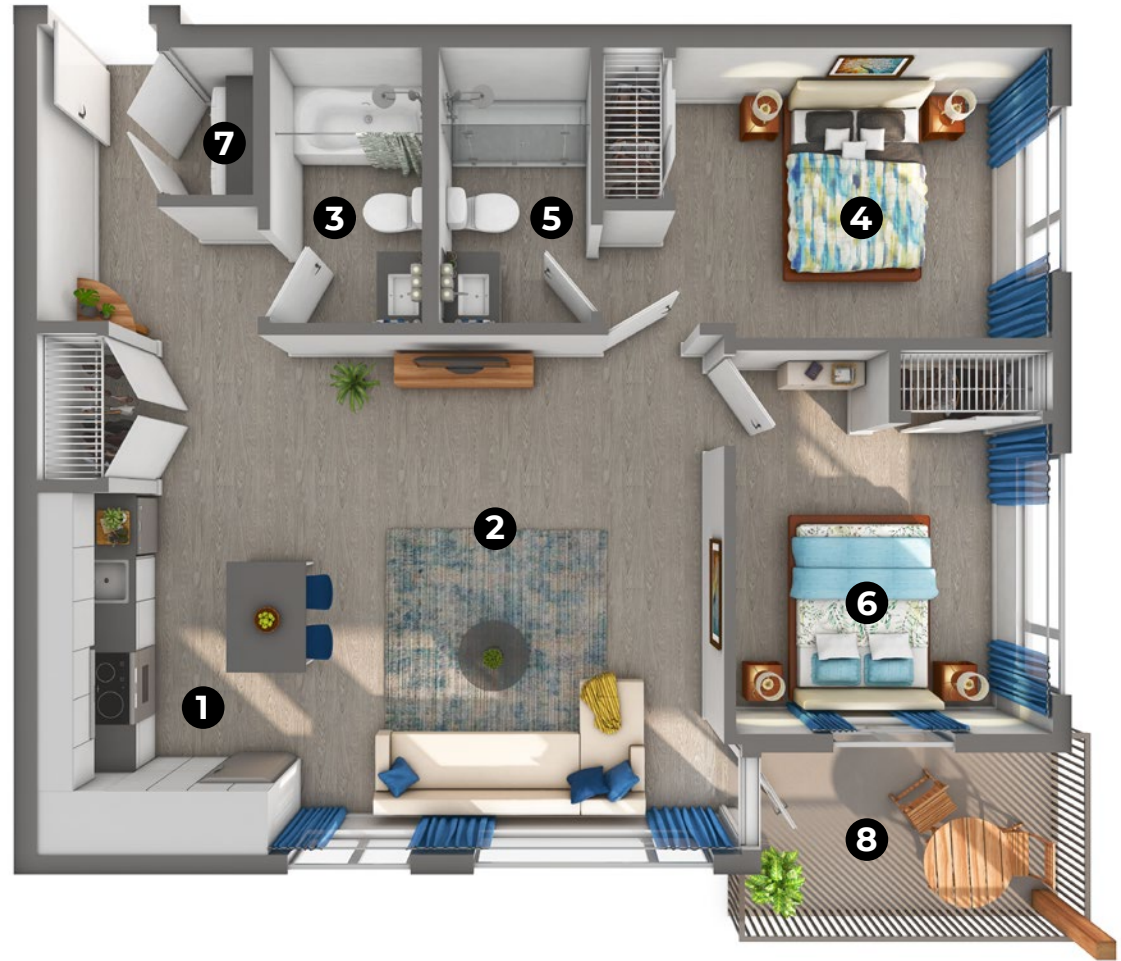
CABINETRY:
FLAT SLAB



COUNTERS:
QUARTZ



FLOORING:
LUXURY
VINYL TILE



- | | | | | |
|-------------------------------------|-----------------------------------|----------------------------------|------------------------------------|-----------------------------|
| 1 Kitchen/Dining
9' x 17' | 2 Living Room
14' x 17' | 3 Bathroom
9' x 5' | 4 Bedroom
14' 8" x 9' 6" | 5 Ensuite
9' x 5' |
| 6 Bedroom
10' 10" x 13' | 7 Laundry
3' x 4' 10" | 8 Balcony
11' 10" x 7' | | |

Please note, all floor plans and photos are provided for illustrative purposes only. ALL MEASUREMENTS ARE APPROXIMATE. Actual layouts may be different than shown and could vary in size and scale. merewoodapartments.ca



MEREWOOD APARTMENTS

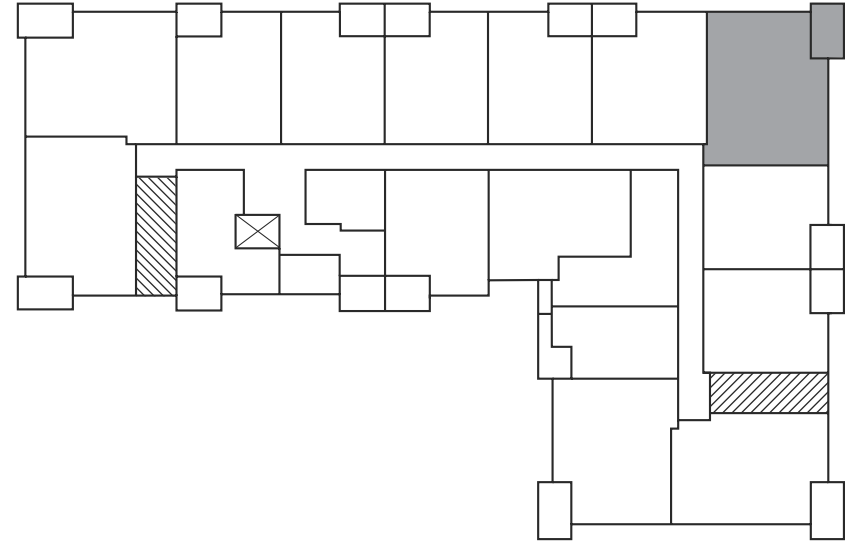
377 & 385 Moilliet Street South
Parksville, BC

REDWOOD

850 sq ft

377 Moilliet Street South

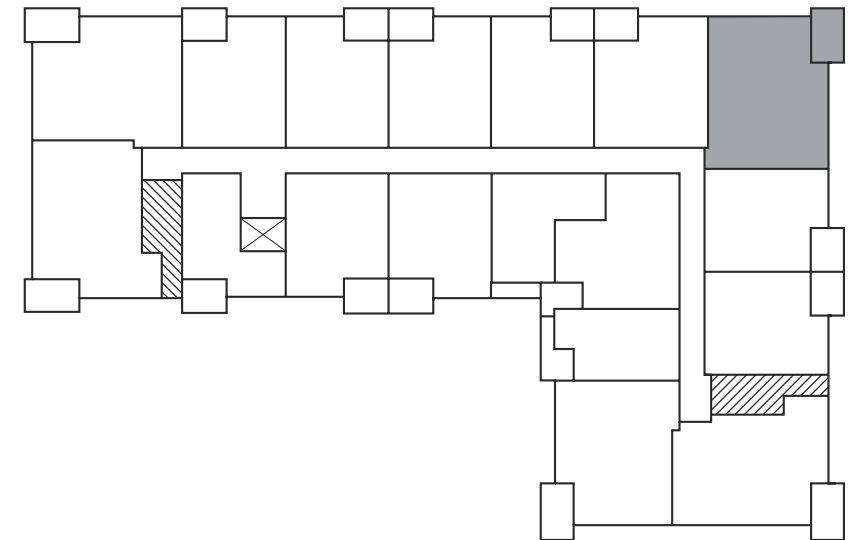
First Floor



⊠ Elevator ⊠ Stairwell

377 Moilliet Street South

Second Floor –
Fourth Floor



⊠ Elevator ⊠ Stairwell



MEREWOOD APARTMENTS

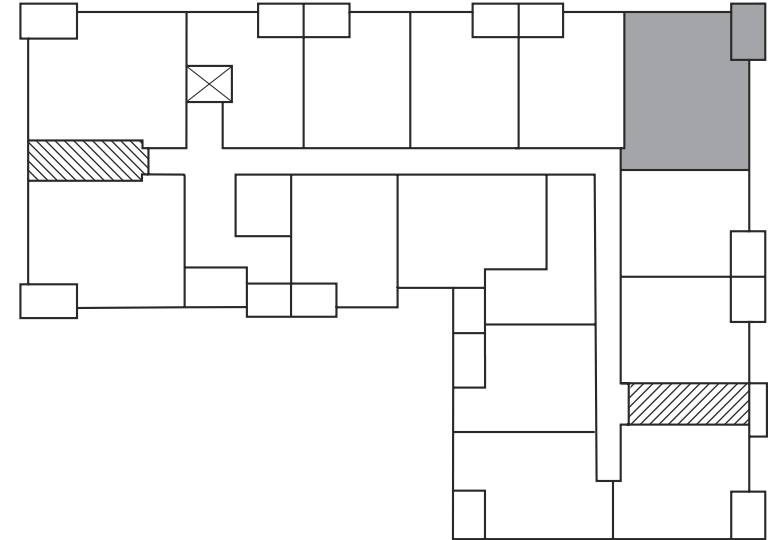
377 & 385 Moilliet Street South
Parksville, BC

REDWOOD

850 sq ft

385 Moilliet Street South

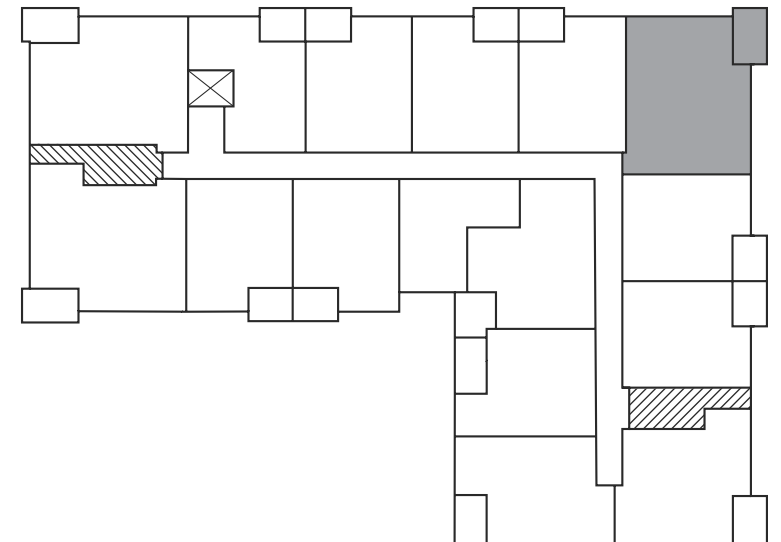
First Floor



⊠ Elevator ⊠ Stairwell

385 Moilliet Street South

Second Floor –
Fourth Floor



⊠ Elevator ⊠ Stairwell



MEREWOOD APARTMENTS

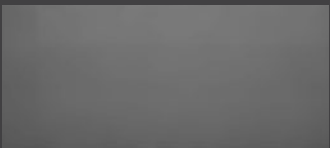
377 & 385 Moilliet Street South
Parksville, BC

CHESTNUT 858-870 sq ft

The floor plan illustrated here includes these finishes:



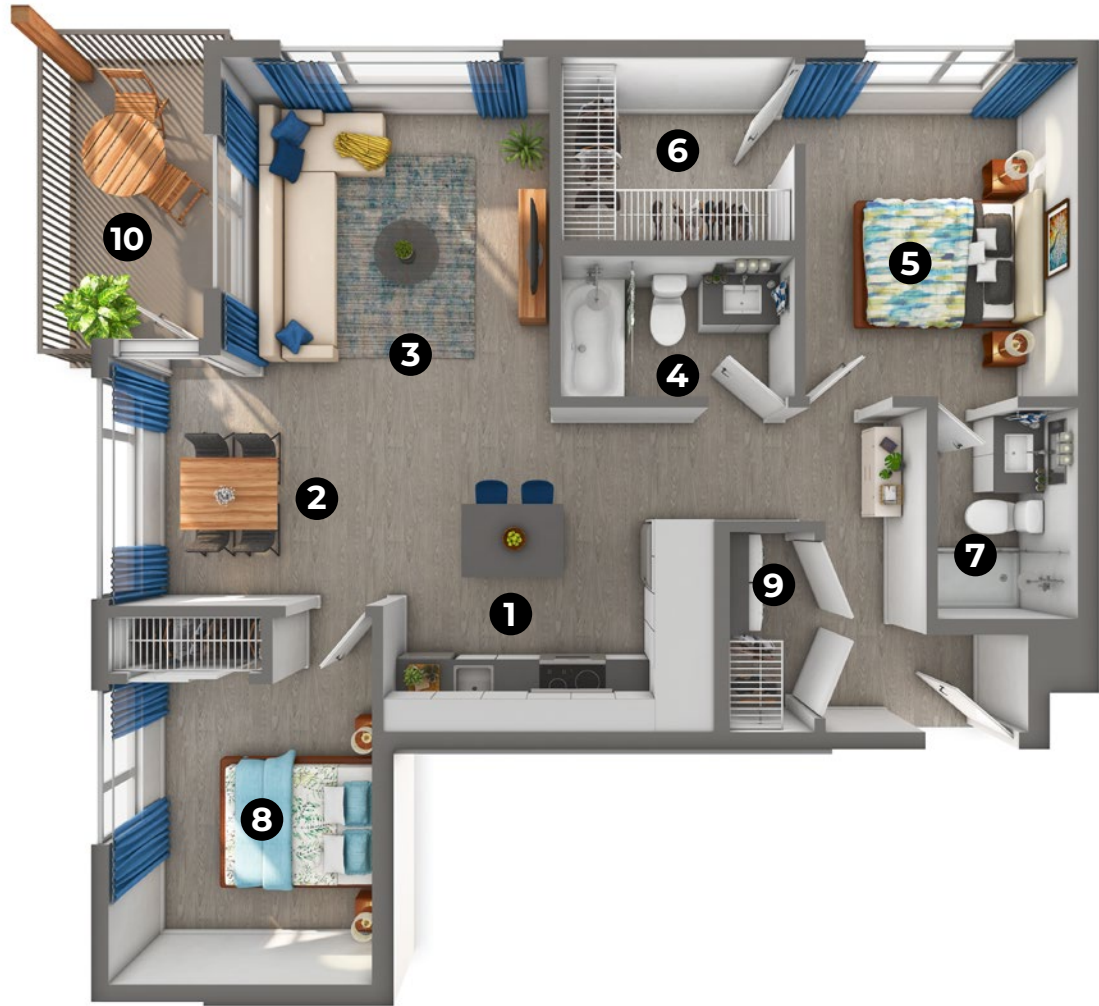
CABINETY:
FLAT SLAB



COUNTERS:
QUARTZ



FLOORING:
LUXURY
VINYL TILE



- | | | | | |
|--|--------------------------------|--------------------------------------|---------------------------------|---------------------------------|
| 1 Kitchen
11' 9" x 11' 8" | 2 Dining
6' 3" x 9" | 3 Living Room
12' x 10' 8" | 4 Bathroom
5' x 8' 4" | 5 Bedroom
9' 9" x 12' |
| 6 Walk-in Closet
8' 4" x 7' 5" | 7 Ensuite
5' x 7' 4" | 8 Bedroom
9' 9" x 10' 9" | 9 Laundry
3' x 7' 2" | 10 Balcony
7' x 12' |

Please note, all floor plans and photos are provided for illustrative purposes only. ALL MEASUREMENTS ARE APPROXIMATE. Actual layouts may be different than shown and could vary in size and scale. merewoodapartments.ca



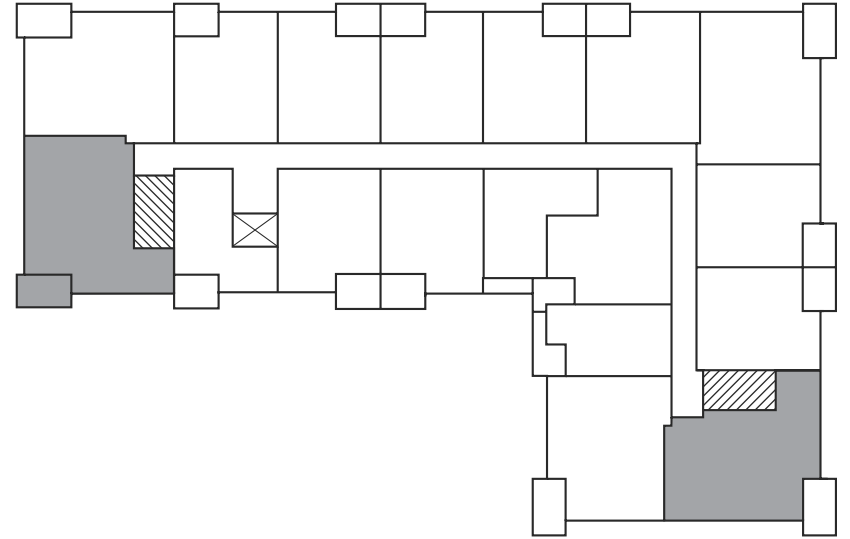
MEREWOOD APARTMENTS

377 & 385 Moilliet Street South
Parksville, BC

CHESTNUT
858-870 sq ft

377 Moilliet Street South

Third Floor –
Fourth Floor



 Elevator  Stairwell
