



MEREWOOD APARTMENTS

377 & 385 Moilliet Street South
Parksville, BC

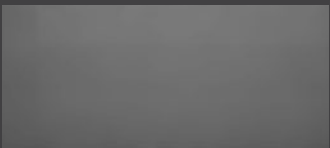
TAMARACK

815-827 sq ft

The floor plan illustrated here includes these finishes:



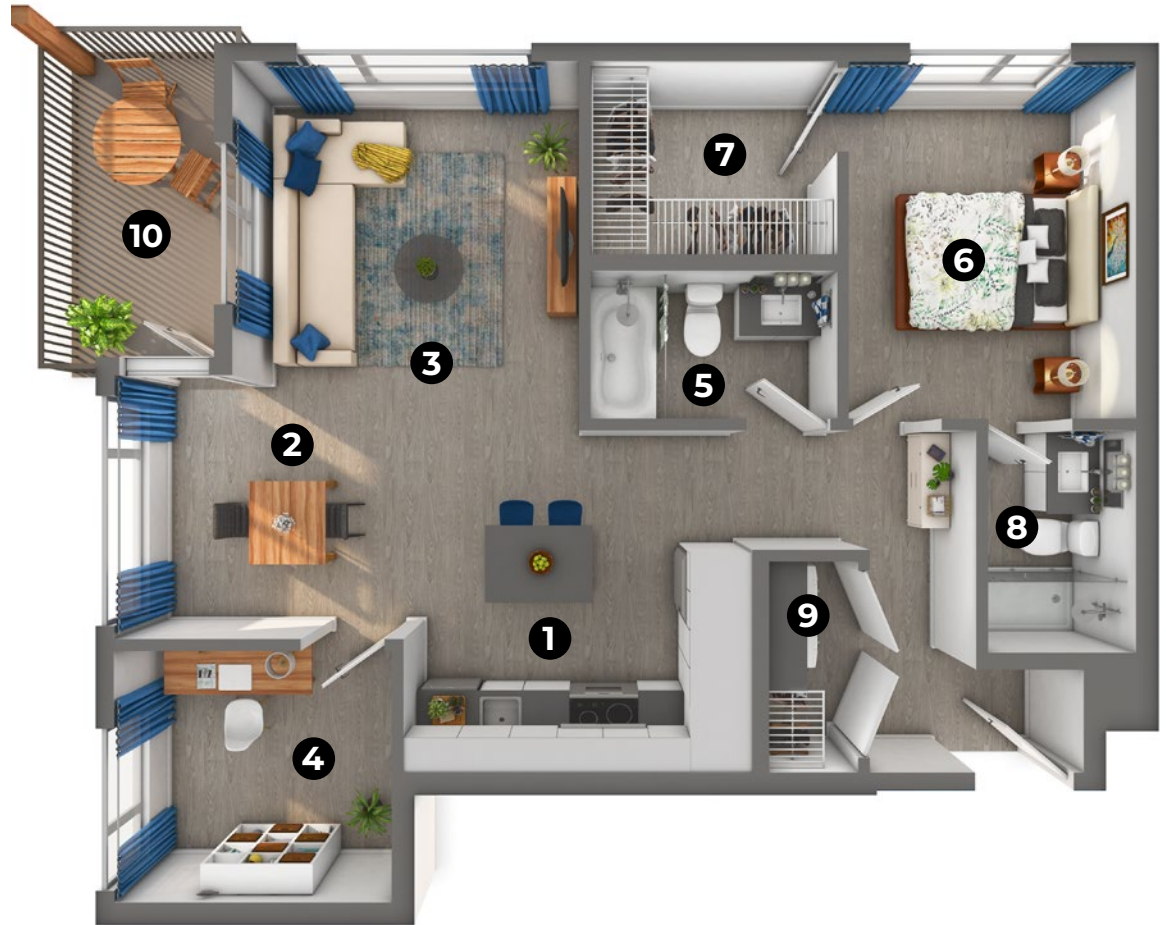
CABINETY:
FLAT SLAB



COUNTERS:
QUARTZ



FLOORING:
LUXURY
VINYL TILE



- | | | | | |
|-------------------------------------|--|---|--------------------------------|---------------------------------|
| 1 Kitchen
11' 9" x 11' 6" | 2 Dining
10' x 9' | 3 Living Room
11' 8" x 10' 6" | 4 Den
9' 4" x 8' 6" | 5 Bathroom
8' 4" x 5' |
| 6 Bedroom
9' 8" x 12' 1" | 7 Walk-in Closet
8' 4" x 6' 6" | 8 Ensuite
5' x 7' 7" | 9 Laundry
3' x 7' 2" | 10 Balcony
7' x 12' |

Please note, all floor plans and photos are provided for illustrative purposes only. ALL MEASUREMENTS ARE APPROXIMATE. Actual layouts may be different than shown and could vary in size and scale. merewoodapartments.ca



MEREWOOD APARTMENTS

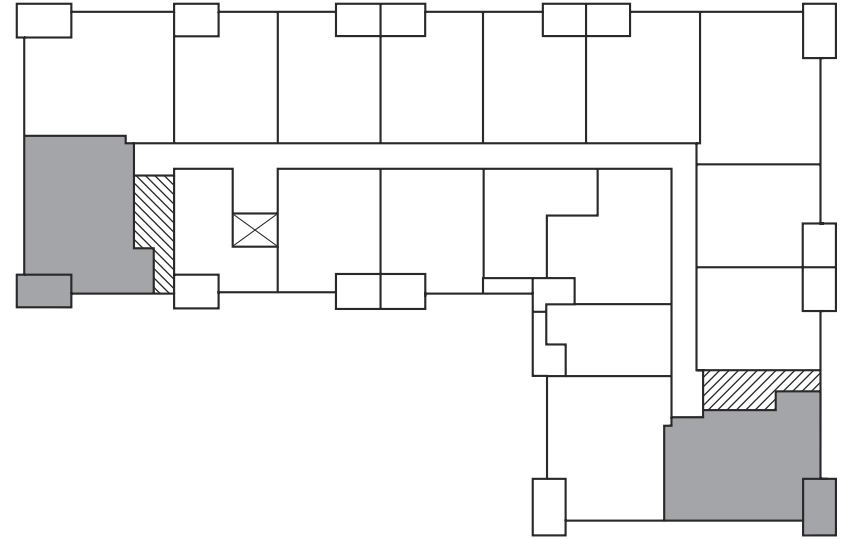
377 & 385 Moilliet Street South
Parksville, BC



TAMARACK

815-827 sq ft

377 Moilliet Street South

Second Floor



 Elevator  Stairwell
