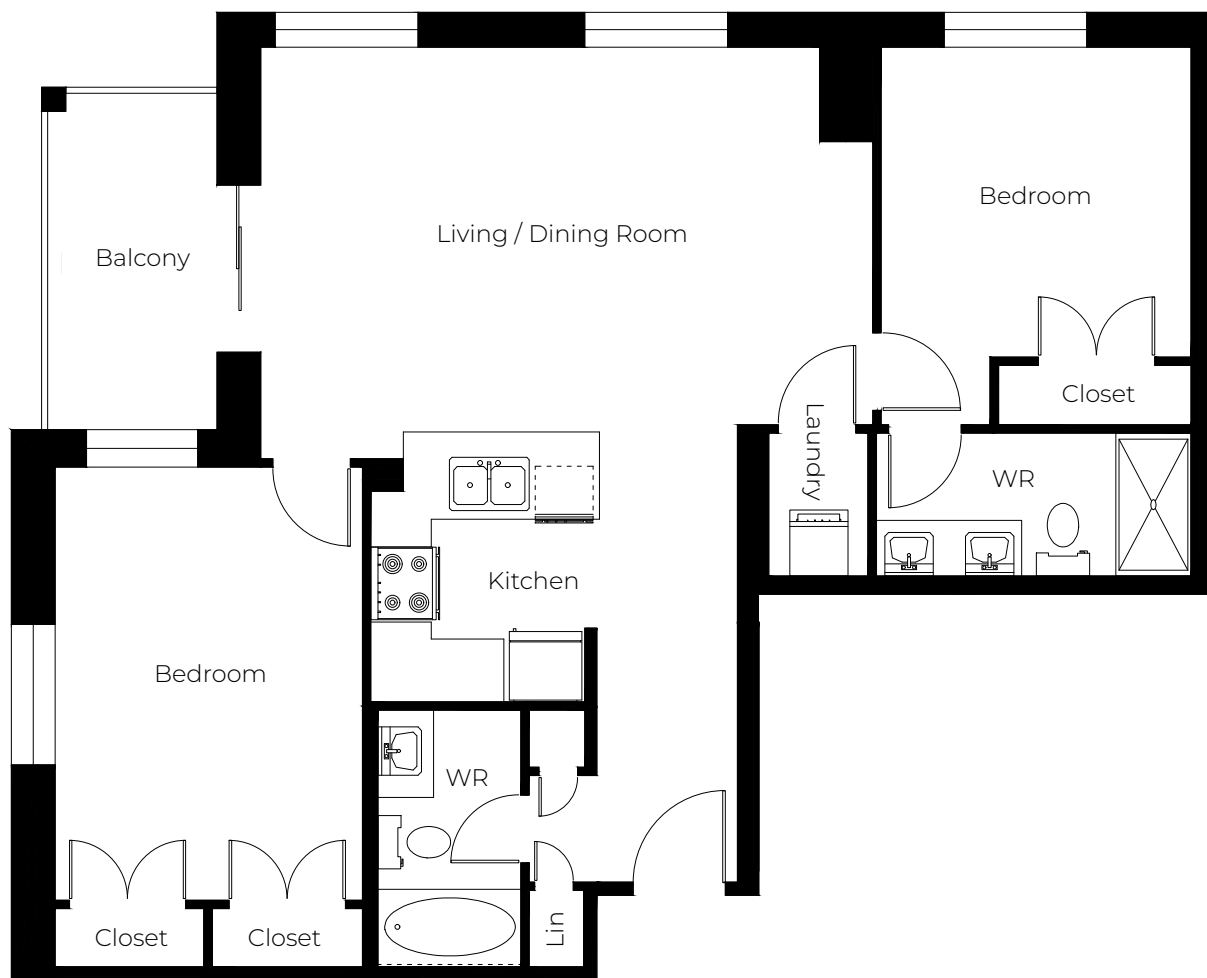




THE KORTYARD APARTMENTS

171 Kortright Road West,
Guelph, ON N1G 0G4

2 BED, 2 BATH
956 - 1026 sq ft



Please note, all floor plans and photos are provided for illustrative purposes only. ALL MEASUREMENTS ARE APPROXIMATE. Actual layouts and finishes may be different than shown and could vary in size and scale.

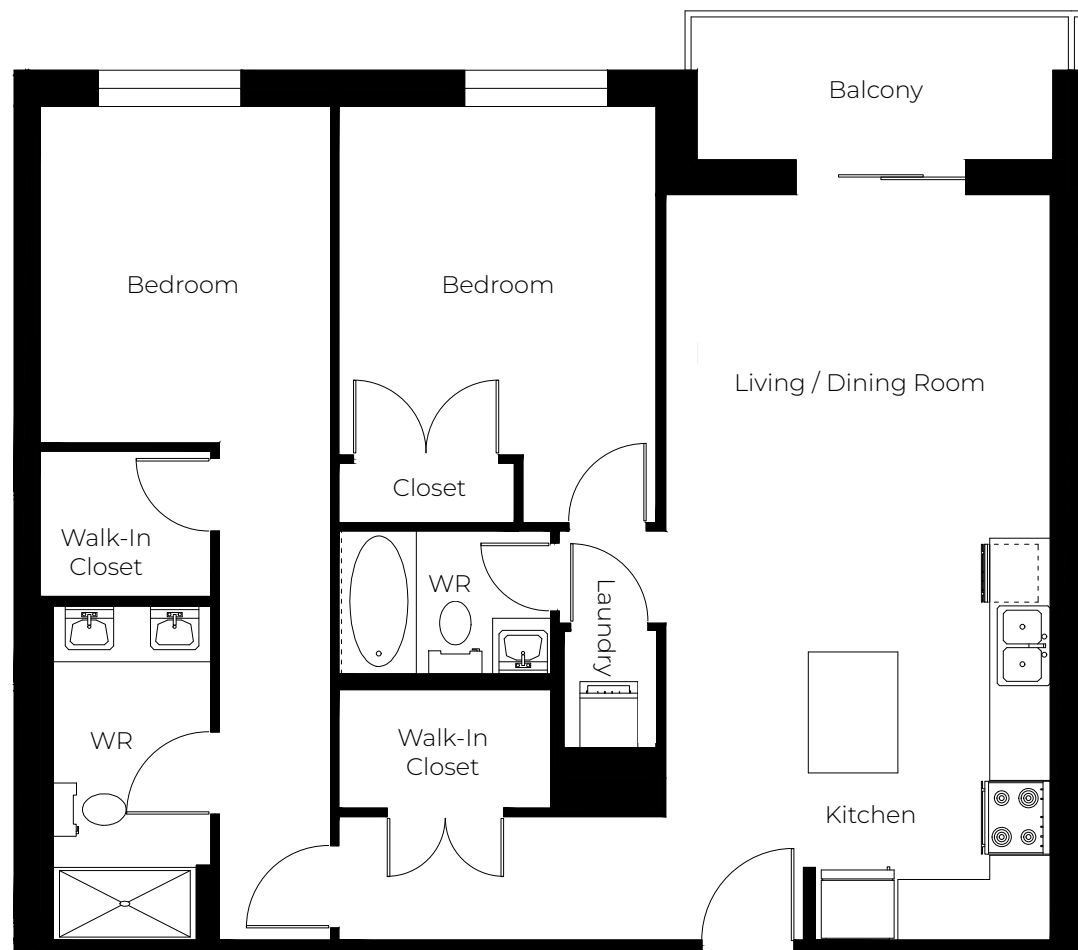


THE KORTYARD APARTMENTS

171 Kortright Road West,
Guelph, ON N1G 0G4

2 BED, 2 BATH

1052 - 1085 sq ft



Please note, all floor plans and photos are provided for illustrative purposes only. ALL MEASUREMENTS ARE APPROXIMATE. Actual layouts and finishes may be different than shown and could vary in size and scale.

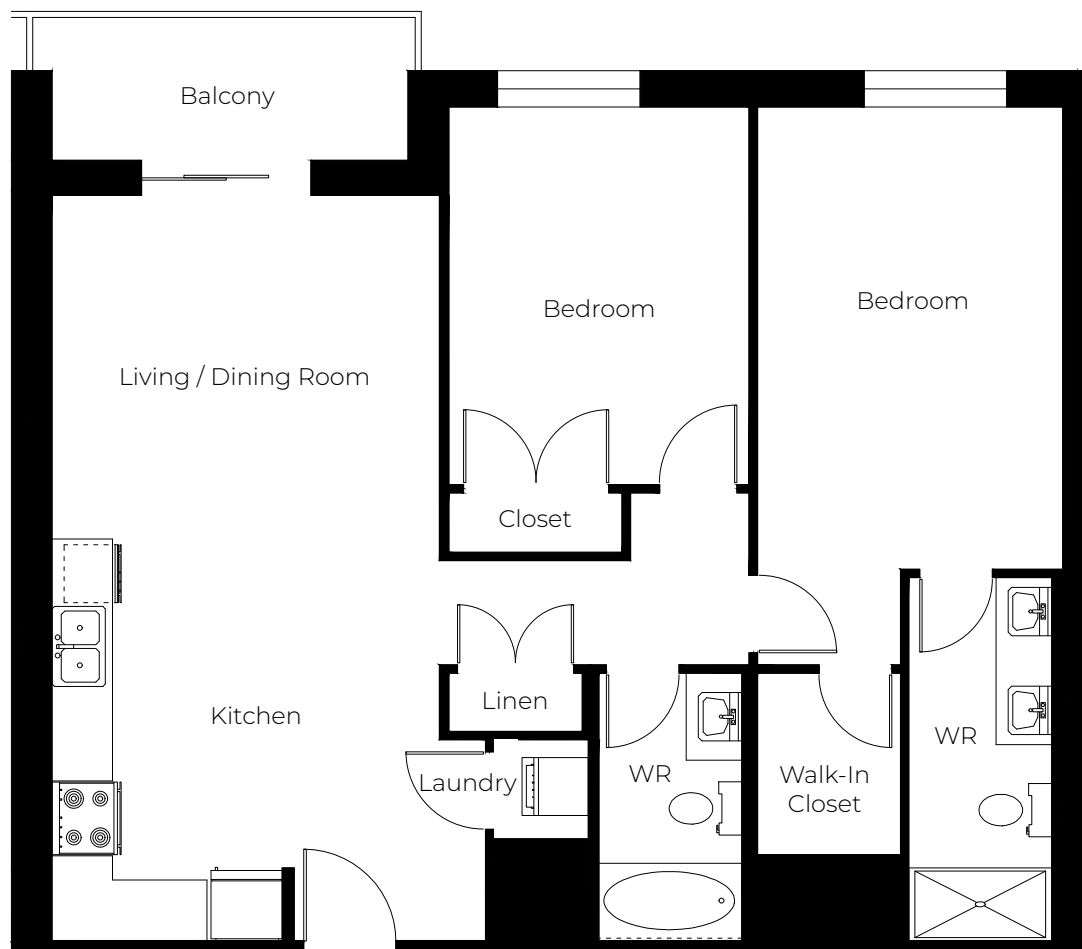


THE KORTYARD APARTMENTS

171 Kortright Road West,
Guelph, ON N1G 0G4

2 BED, 2 BATH

1053 - 1077 sq ft



Please note, all floor plans and photos are provided for illustrative purposes only. ALL MEASUREMENTS ARE APPROXIMATE. Actual layouts and finishes may be different than shown and could vary in size and scale.



THE KORTYARD APARTMENTS

171 Kortright Road West,
Guelph, ON N1G 0G4

2 BED, 2 BATH

1055 - 1086 sq ft



Please note, all floor plans and photos are provided for illustrative purposes only. ALL MEASUREMENTS ARE APPROXIMATE. Actual layouts and finishes may be different than shown and could vary in size and scale.



THE KORTYARD APARTMENTS

171 Kortright Road West,
Guelph, ON N1G 0G4

2 BED, 2 BATH

1058 - 1071 sq ft



Please note, all floor plans and photos are provided for illustrative purposes only. ALL MEASUREMENTS ARE APPROXIMATE. Actual layouts and finishes may be different than shown and could vary in size and scale.



THE KORTYARD APARTMENTS

171 Kortright Road West,
Guelph, ON N1G 0G4

2 BED, 2 BATH

1068 - 1204 sq ft



Please note, all floor plans and photos are provided for illustrative purposes only. ALL MEASUREMENTS ARE APPROXIMATE. Actual layouts and finishes may be different than shown and could vary in size and scale.